

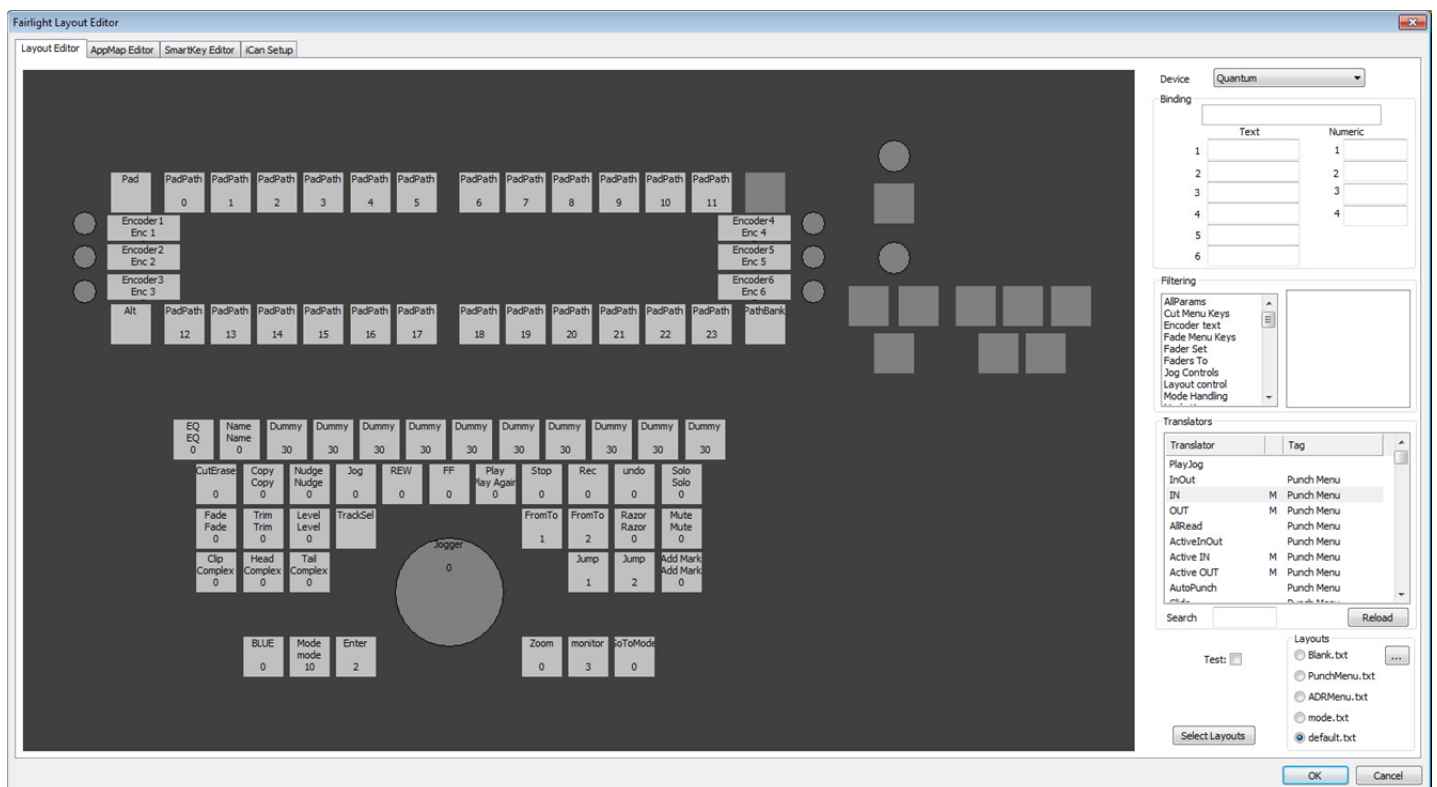
# FAIRLIGHT | XSTREAM



The **XStream** controller is a new addition to the Fairlight Product range. It complements the existing Xynergi, but is more compact with a reduced number of controls and above all, a reduced price point.

The controller is built on the new **iCan** (Integrate & Control Application over Network) technology which Fairlight introduced in its Version 4.1 platform release. This new infrastructure allows for easy or extensive modification of the layout of the functions on the keys.

The **iCan** technology also allows for the controller to be used with other applications.



## LAYOUT EDITOR

**Features:**

- 43 picture keys, optionally fitted with Pipe Keys (fixed image, TFT illuminated)
- 24 Single-color LED keys (white)
- 4 Bicolour LED keys (blue/yellow)
- 6 touch sensitive rotary encoders
- Hi-res jog wheel
- 270mm x 81mm = 900 X by 296 Y pixel Pad graphics area.

**Colour:**

- Silver

**Connectivity:**

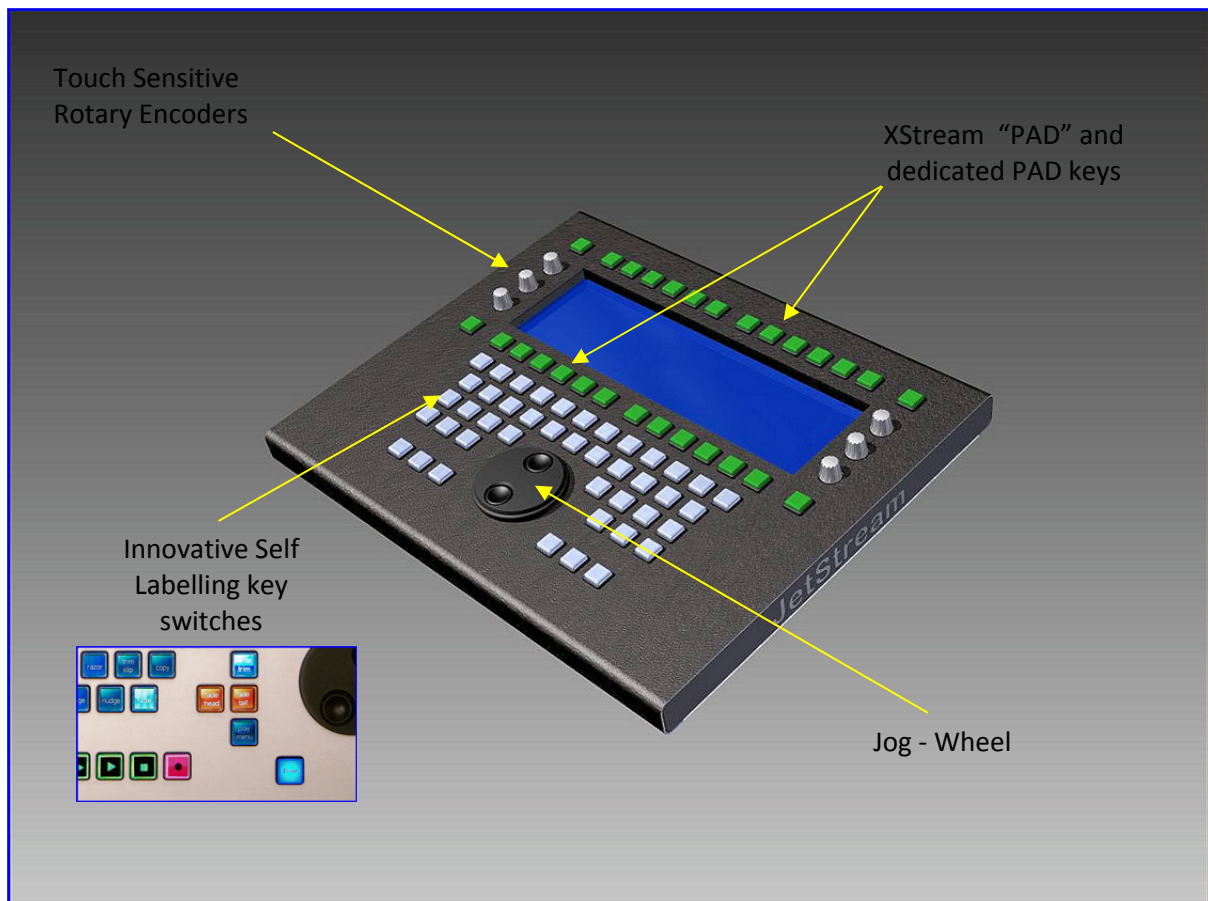
- 10/100 Ethernet (For Host connection)
- 2 x USB 2.0 (For Mouse or external keyboard)

**Power**

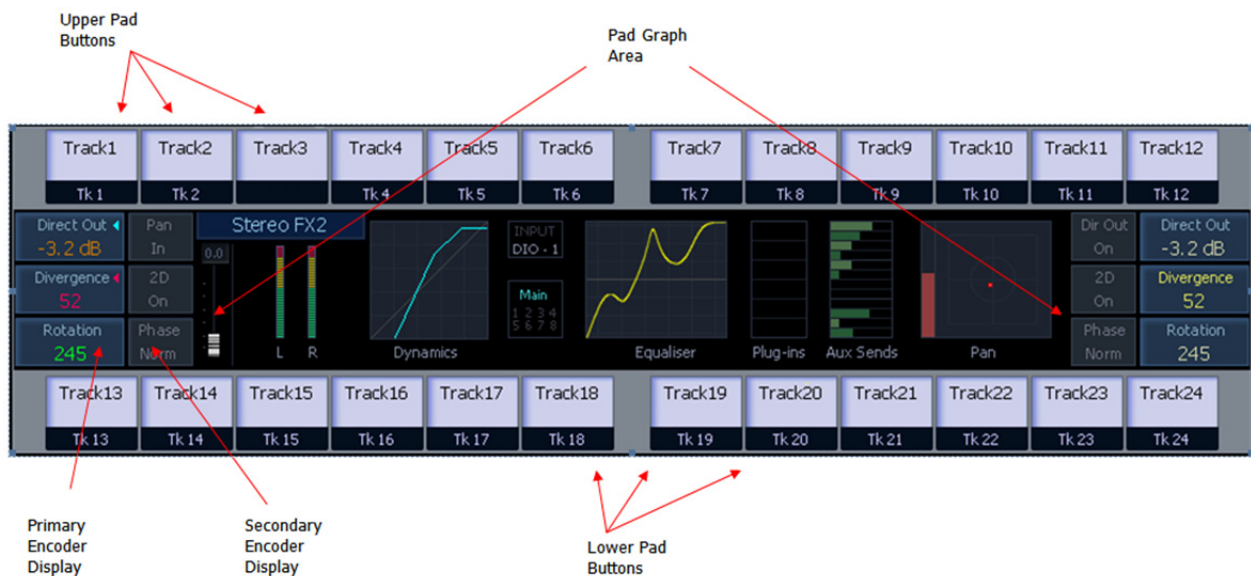
- 12 Volts, external 3-pin PSU.

**Dimensions:**

- Side Profile – Same as Xynergi/XE-6
- Width: 380 mm



## Overview of XStream <PAD> Layout



## Pad Modes

### Track Mode



In Track Mode, the Upper and Lower Pad buttons are used as 24 track keys are displayed at top and bottom.

The Graph Area shows the details of the Current Module.

The Primary and Secondary Encoder displays show the parameters controlled by the encoders, in relation to the Current Module. The encoders change the parameters shown in the Primary Encoder displays.

The parameters controlled by the Encoders are arranged in categories (Path, EQ, Dyn, Aux and Plug-ins) and further divided into Pages within each category. These are visible in Pad Mix Mode.

## ALT Mode

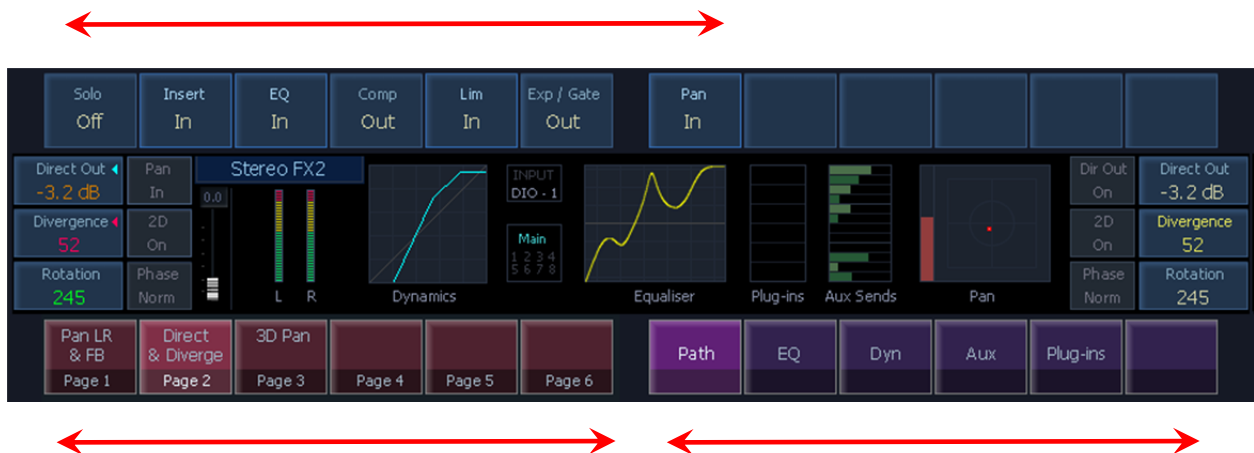


ALT mode is entered by pressing the ALT button. This may be momentary or latching.

In ALT mode, the encoders control the parameters in the Secondary Encoder displays. In general these are switched functions, operated by touching the encoders.

ALT mode is a sub-mode of the current Pad Mode, available in Track Mode, Pad Mix Mode and Monitor Mode.

## Pad Mix Mode



Pad Mix Mode is entered by pressing the Pad button in the upper left of the XStream controller. Its function is to make the Pad fully available for Mixing.

The parameters controlled by the Encoders are arranged in categories (Path, EQ, Dyn, Aux and Plug-ins) and further divided into Pages within each category.

In this mode, the Lower Pad buttons choose parameter categories (known as ParaPad modes) and Pages within those categories.

The Upper Pad buttons toggle Mix parameters, extending the function of the Secondary Encoder. These Mix parameters may be fixed or paged.

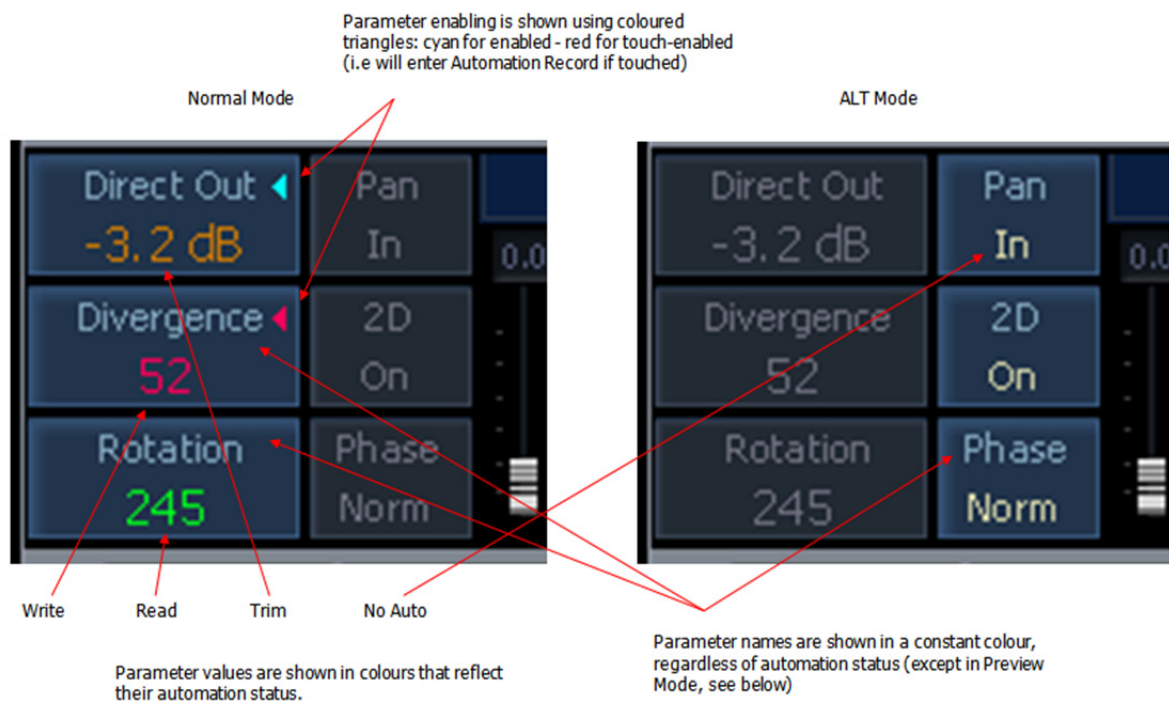
## Monitor Mode



In Monitor Mode, the Upper and Lower Pad buttons show all the valid system buses, and allow the user to choose one as the monitoring source.

The Current Module becomes the CR Monitor, and the Encoders are changed from their usual functions to control specific monitoring parameters (note: this picture does not show the correct parameters for Monitoring).

## Encoder Details







Preview Mode - both name and value of parameter are shown in yellow.

